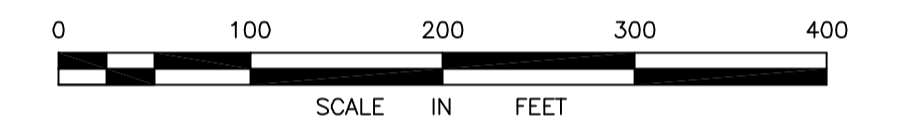
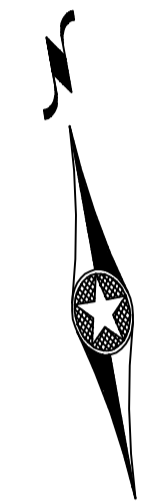
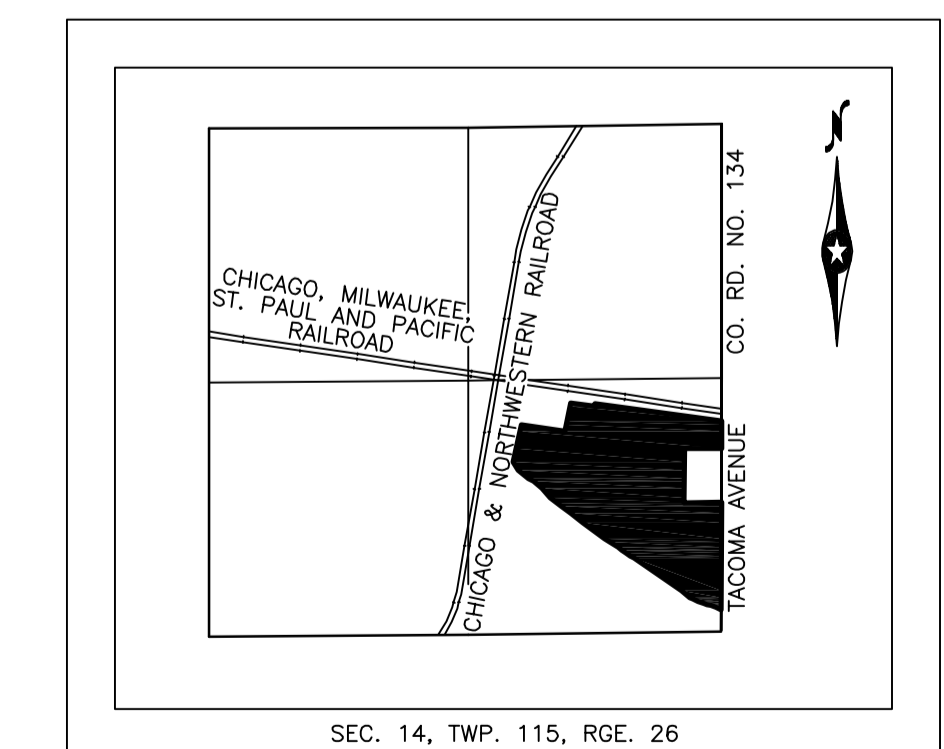
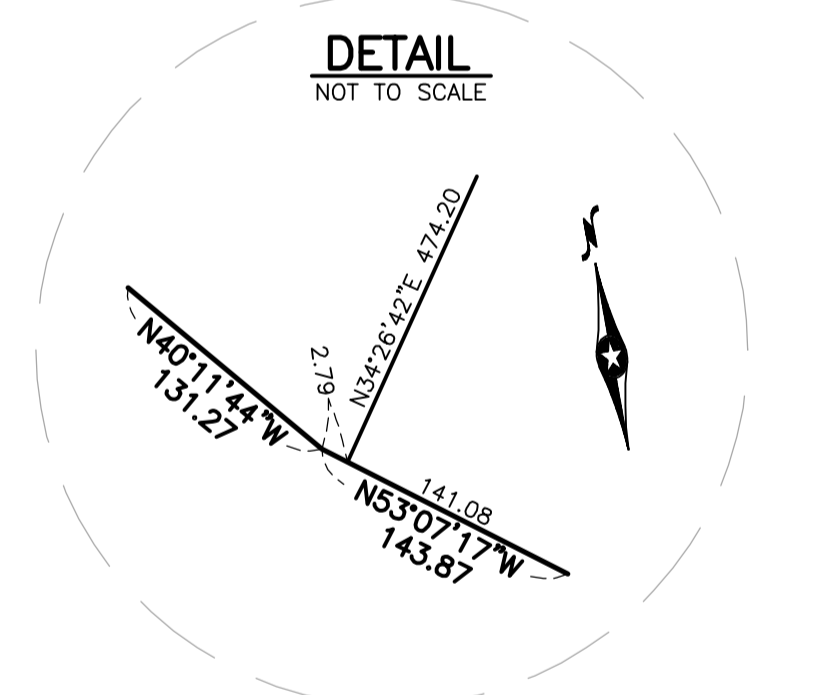


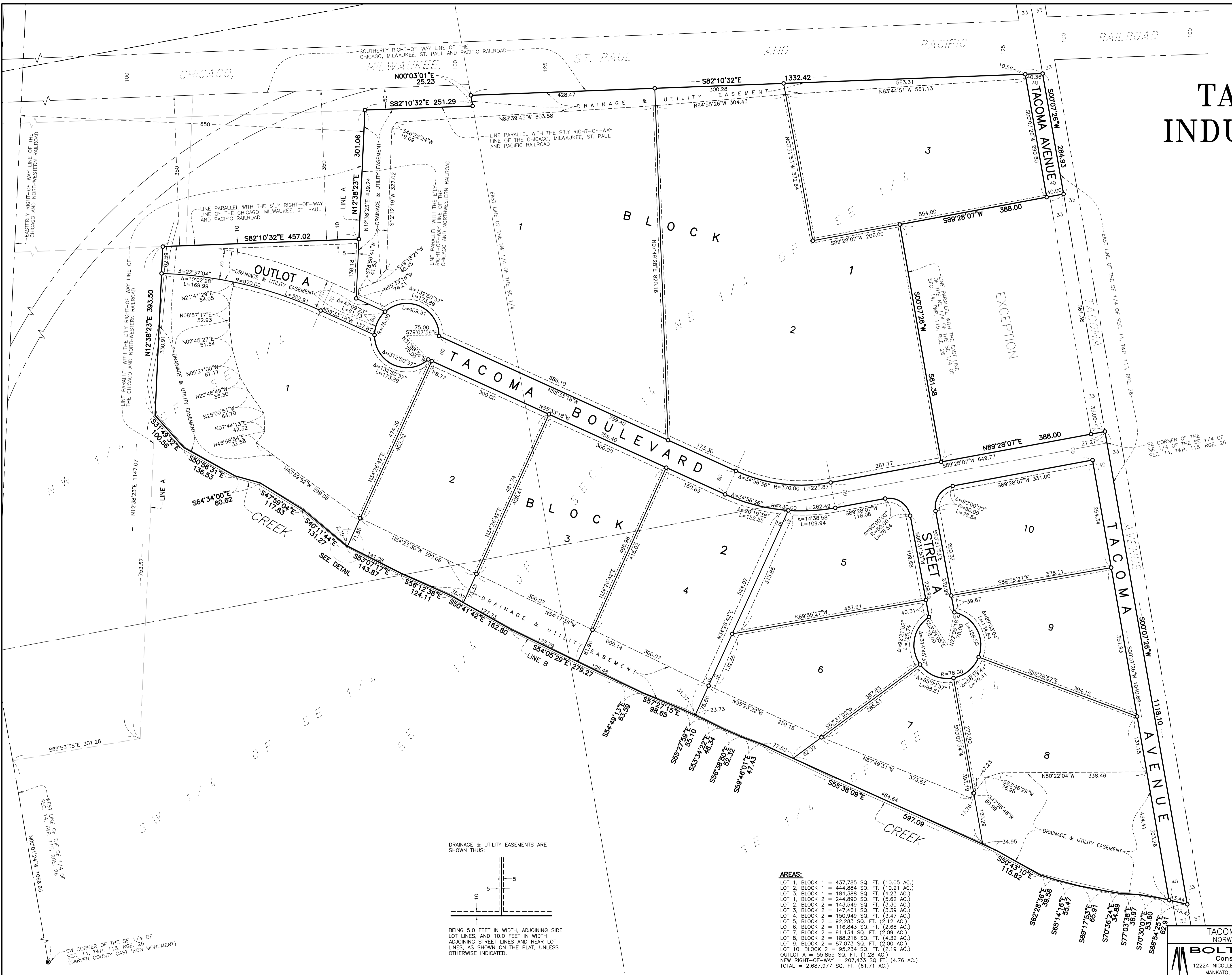
TACOMA WEST INDUSTRIAL PARK



Orientation of the bearing system is based upon the East line of the Southeast Quarter of Section 14, Township 115 North, Range 26 West, Carver County, Minnesota which is assumed to bear South 00 degrees 07 minutes 26 seconds West.

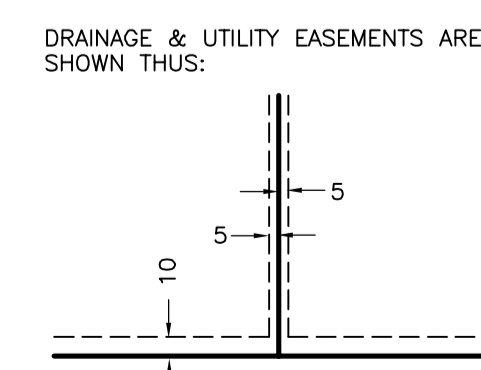


LOCATION MAP
NOT TO SCALE



AREAS:

LOT 1, BLOCK 1	= 437,785 SQ. FT. (10.05 AC.)
LOT 2, BLOCK 1	= 444,884 SQ. FT. (10.21 AC.)
LOT 3, BLOCK 1	= 184,388 SQ. FT. (4.23 AC.)
LOT 1, BLOCK 2	= 244,890 SQ. FT. (5.62 AC.)
LOT 2, BLOCK 2	= 143,549 SQ. FT. (3.30 AC.)
LOT 3, BLOCK 2	= 147,461 SQ. FT. (3.39 AC.)
LOT 4, BLOCK 2	= 150,949 SQ. FT. (3.47 AC.)
LOT 5, BLOCK 2	= 82,283 SQ. FT. (2.12 AC.)
LOT 6, BLOCK 2	= 116,843 SQ. FT. (2.68 AC.)
LOT 7, BLOCK 2	= 91,134 SQ. FT. (2.09 AC.)
LOT 8, BLOCK 2	= 188,216 SQ. FT. (4.32 AC.)
LOT 9, BLOCK 2	= 87,073 SQ. FT. (2.00 AC.)
LOT 10, BLOCK 2	= 95,234 SQ. FT. (2.19 AC.)
OUTLOT A	= 55,855 SQ. FT. (1.28 AC.)
NEW RIGHT-OF-WAY	= 207,433 SQ. FT. (4.76 AC.)
TOTAL	= 2,687,977 SQ. FT. (61.1 AC.)



DRAINAGE & UTILITY EASEMENTS ARE SHOWN THUS:
BEING 5.0 FEET IN WIDTH, ADJOINING SIDE LOT LINES, AND 10.0 FEET IN WIDTH ADJOINING STREET LINES AND REAR LOT LINES, AS SHOWN ON THE PLAT, UNLESS OTHERWISE INDICATED.

SW CORNER OF THE SE 1/4 OF SEC. 14, TWP. 115, RGE. 26 (CARVER COUNTY CAST IRON MONUMENT)

TACOMA WEST INDUSTRIAL PARK
NORWOOD YOUNG AMERICA, MN 55368

BOLTON & MENK, INC.
Consulting Engineers & Surveyors
12224 NICOLLET AVENUE S., BURNSVILLE, MN 55337 (952) 890-0509
MANKATO, MN FAIRMONT, MN SLEEPY EYE, MN WILLMAR, MN
BURNSVILLE, MN CHASKA, MN AMES, IA

P/O THE SE 1/4 OF SEC. 14, TWP. 115, RGE. 26
FOR: CITY OF NORWOOD YOUNG AMERICA

COORD FILE = I:\NORW\C1237189\CAD\REV_37189PR1.DWG 10-12-2006 1:47p.m.
COORD FILE = I:\NORW\C1237189\SU\37189G01.ORD JOB NUMBER: C12.37189 FIELD BOOK: DRAWN BY: ERW